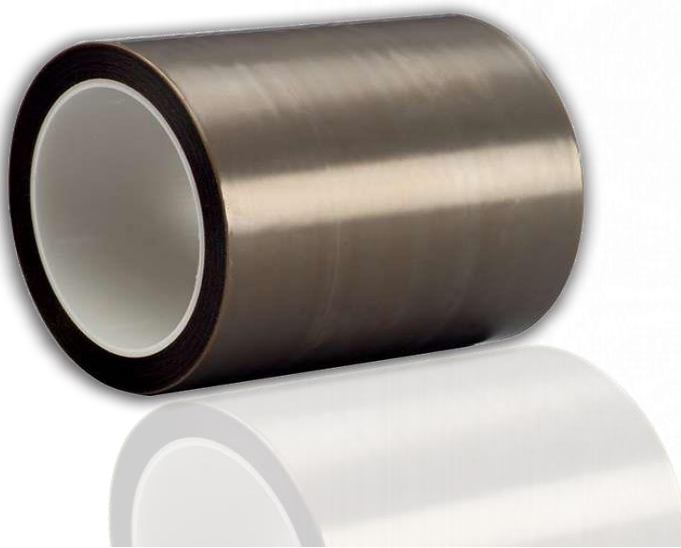


LINQTAPE™ PTFE3S-Series

3 mil Skived PTFE Film with silicone adhesive



PRESSURE SENSITIVE SILICONE ADHESIVE

SUITABLE FOR HIGH TEMPERATURE APPLICATIONS

EXCELLENT ACID AND ALKALI RESISTANCE



PRODUCT DESCRIPTION

Insulating tape of 3 mil Skived PTFE Film with pressure sensitive silicone adhesive.



PRODUCT APPLICATION

Used for heating panels, wrapping high voltage wires in high temperature conditions and in many electrical and thermal insulation applications.



PRODUCT FEATURES

Excellent acid and alkali resistance with very low surface friction. Class H rating that makes it ideal for electrical insulation. RoHs and REACH Compliant.

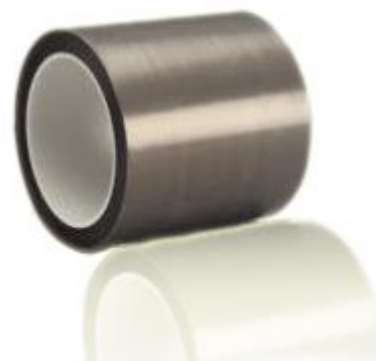


PRODUCT DESCRIPTION

LINQTAPE™ PTFE3S-Series is a high-temperature resistant PTFE tape designed for both permanent and temporary bonding in many high temperature and high voltage applications. Its high elongation makes the tape useful in applications that require conformability.

LINQTAPE™ PTFE3S-Series provides an excellent balance of electrical, thermal, and chemical properties over a wide range of temperatures. It can be used in applications that may see temperatures up to 260°C (500°F).

LINQTAPE™ PTFE3S-Series comes in 33 meter (36 yard) rolls of varying widths. LINQTAPE PTFE films with silicone adhesive are available in a range of thicknesses, starting from 2 mil (50.8µm) thickness and up. Custom thicknesses are available upon request.



PRODUCT APPLICATION



► Applications

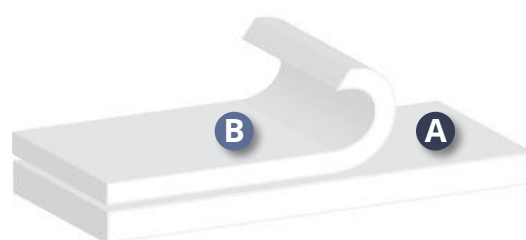
- Heating panels
- Electrical insulation
- Thermal Insulation
- Wrapping and connecting high voltage cables
- Bellows and hose liners
- Tank and Vessel lining
- Slide bearings



PRODUCT FEATURES

TYPICAL PROPERTIES	UNIT	VALUE
Color		Gray
Adhesion Type		Silicone
Film (Backing) Thickness		76.2 µm (3.0 mil)
Adhesive Thickness		38.1 µm (1.5 mil)
Total Thickness		114.3 µm (4.5 mil)
Adhesion to Steel	N/25mm oz/in	7.0 25.0
Tensile Strength	N/25mm lbs/in	88.98 20.0
Elongation	%	300
Dielectric Strength	Volts	9500
Insulation Class		180 (H)
Operating Temperature Range	From To	-60°C 260°C
Temperature Resistance	°C °F	260 500

► PRODUCT CROSS-SECTION



A PTFE Film: 76.2 µm

B Silicone Adhesive Layer: 38.1µm

► PRODUCT NOMENCLATURE

PTFE: Polytetrafluoroethylene
3: mil Backing Thickness
S: Silicone Adhesive

STORAGE AND HANDLING

LINQTAPE™ PTFE3S-Series is supplied in rolls and should be kept in a cool (10°C – 25°C) dry place (40% – 75% humidity) away from direct sunlight or temperature extremes. Once removed from packaging it should be protected against dust and other impurities.

DATA RANGES

The data contained herein may be reported as a typical value and/or range values based on actual test data and are verified on a periodic basis.

The above figures are typical material properties only and are not to be used for product specification purposes. To generate a specification for this product, please contact our Quality Manager and request a copy of the current stock specification. The information and recommendations supplied in this document are believed to be accurate but no guarantee of their accuracy is made; they are for guidance only and should not be construed as a warranty. All implied warranties are expressly disclaimed, including without limitations any warranty of merchantability and fitness for use. It is recommended that purchasers before using this product conduct their own tests to determine whether the product is suitable for their particular purposes under their own operating conditions.



Europe & Asia

CAPLINQ Europe
 De Trompet 1126
 1967DA Heemskerk
The Netherlands
 Tel : +31 (20) 893 2224

Americas

CAPLINQ Corporation
 957 Snowshoe Crescent
 Orléans, Ontario K1C 2Y3
Canada
 Tel : +1 (613) 482.2215

Worldwide

www.caplinq.com
 Email : info@caplinq.com