

# tempmate.®-S1

➔ Single-Use USB Data Logger for Cold Chain Temperature Monitoring



+ 2 Years Shelf-Life<sup>1</sup>

+ Automatic PDF & CSV Report

+ 200 Days Recording

+ Delivery within 48 hours possible

+ Comes with a 6 point Certificate of Validation

+ Secure and easy download of encrypted data files

+ Up to 6 Alarm Limits

+ Backup-Log Feature<sup>2</sup>

1 Depending on Storage Conditions | 2 Background Logging, even if stopped too early



PHARMACEUTICAL  
PRODUCTS



FOOD



TECHNICAL  
PRODUCTS

## Outstanding Single-Use Temperature Logger, for Reliable Cold Chain Monitoring.

The new **tempmate.®-S1** logger has an integrated USB port and PDF & CSV generating software on-board, so no further software or hardware is required to connect the logger and read the recorded temperature data. The **tempmate.®-S1** data logger has an accuracy of  $\pm 0.2^{\circ}\text{C}$  and comes with a 6 point Certificate of Validation. This validation, straight from the manufacturer, saves you time, money, and offers quality assurance for your compliance needs.



tempmate.com



USB  
Connection



IP 67  
Protected



Temperature Range  
-30°C to +70°C



GDP  
compliant



EN 12830  
Compliant



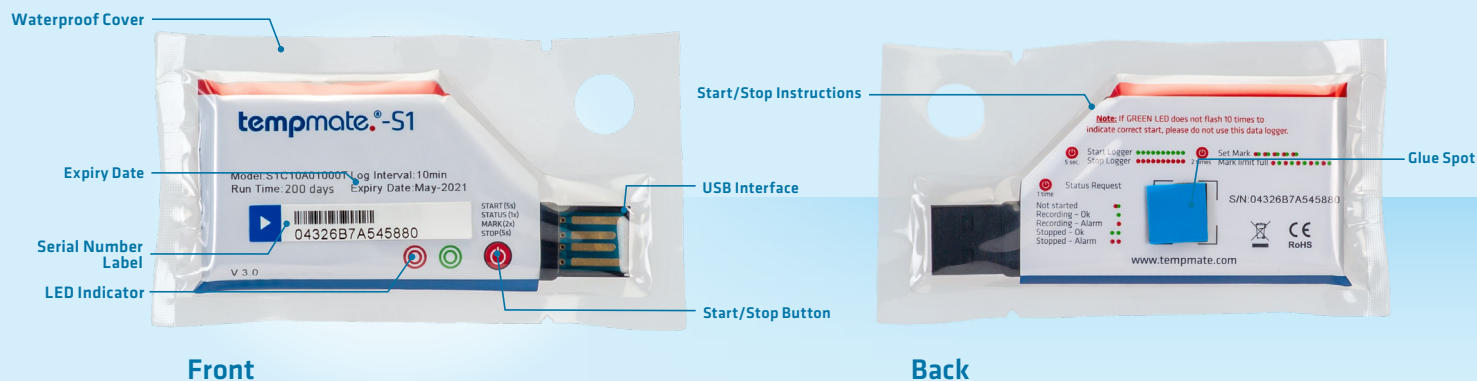
Automatic PDF  
& CSV Report



Made In  
German

# tempmate.®-S1

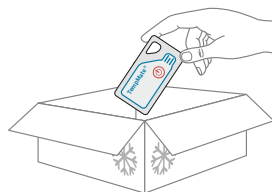
If temperature matters.



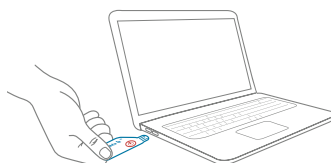
## Easy Handling



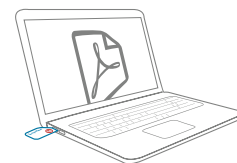
01 Preconfigured and ready to use



02 Add started tempmate.®-S1 to your Shipment



03 Connect stopped Logger directly to USB Port



04 Automated PDF & CSV Report with all Details

## Curious about your Cold Chain?

tempmate.®-S1 continuously monitors all relevant data.

tempmate.®-S1 loggers are specially designed for temperature monitoring in any cold chain logistics. As a pre-programmed device tempmate.®-S1 can be instantly used to monitor your temperature sensitive consignment. The automatically created PDF and CSV report, containing detailed information such as data curve, every single temperature measurement as a table and statistical information. The device does not require labeling per IATA's Dangerous Goods Regulations.

## Your Benefits at a Glance

- + Cost-Effective and Reliable
- + Delivery within 48 Hours Possible
- + Waterproof and Food Grade Packing
- + No Additional Hardware or Software Required
- + Detailed PDF and CSV Report Including Graph and Table
- + High-Precision Digital Sensor
- + 2 Years Shelf-Life
- + Preprogrammable (on request)

## Technical Specifications

Recording Options	Single-Use
Temperature Range	-30 °C to 70 °C
Temperature Accuracy	±0.2°C (0°C/+60°C); ±0.5°C (other range)
Temperature Resolution	0.1°C
Data Storage Capacity	31.200 readings
Shelf Life / Battery	2 years <sup>1</sup> / CR2450 button cell
Recording Interval	10 minutes (standard, others on request)
Recording Duration	up to 200 days <sup>2</sup>
Startup Mode	Button or preprogrammed scheduled start
Stop Mode	Button or preprogrammed scheduled stop
Protection Class	IP67 / NEMA 6

Weight	15.2 g
Dimensions	88 mm × 47 mm × 8 mm (L × W × H)
Certifications	According to EN 12830, according to FCC and CE, RoHS
Validation Certificate	PDF file in memory and online database
Software	PDF or CSV program Optional: Cloud Ready with the tempmate.®-Cloud
Report Generation	Automatic PDF & CSV report
Connection Interface	USB 2.0, A-Type
Alarm Configuration	Optional, up to 6 points

- 1 Depending on optimal storage conditions (+15°C to +23°C / 45% to 75% rH)  
2 With default settings and operating temperatures at -20°C to +35°C

